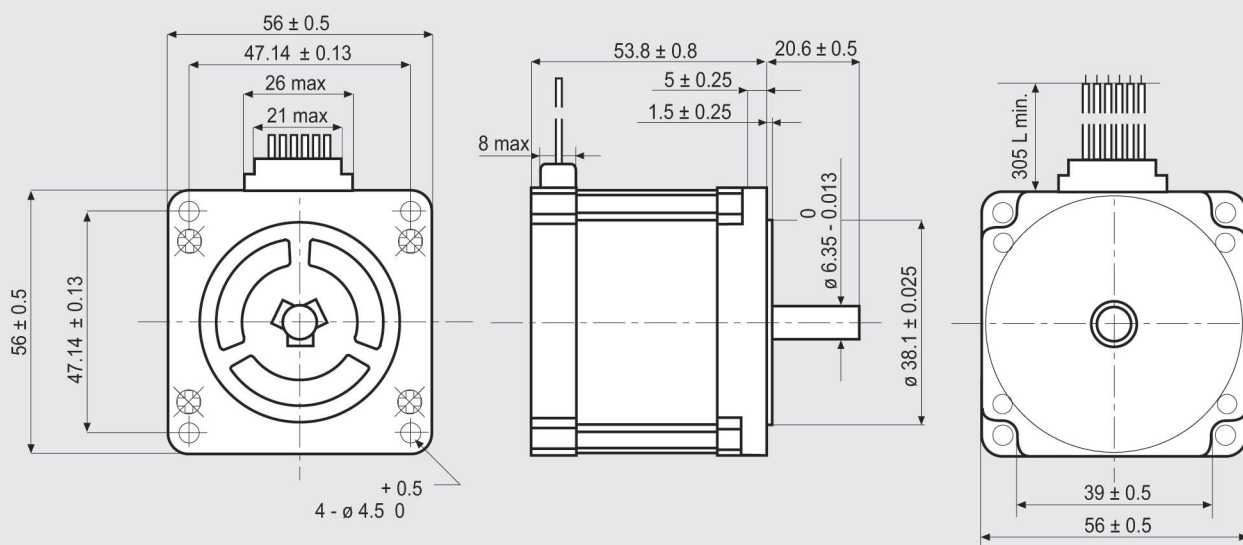


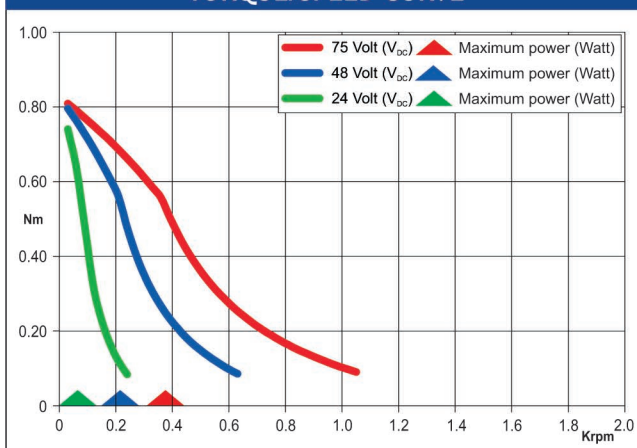
### Dimensions (Unit:mm)



### FEATURES

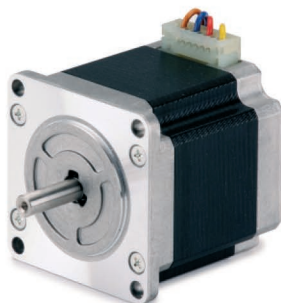
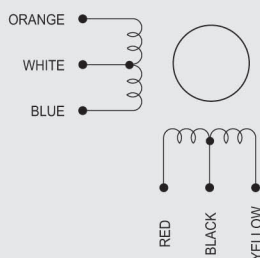
MODEL	103-H7123-0140
BASIC STEP ANGLE	$1.8^\circ \pm 0.09^\circ$
BIPOLAR CURRENT (Amp)	0.7 <sup>(*)</sup>
UNIPOLAR CURRENT (Amp)	1.0
RESISTANCE (Ohm)	6.7
INDUCTANCE (mH)	15
BIPOLAR HOLDING TORQUE (Ncm)	110
UNIPOLAR HOLDING TORQUE (Ncm)	85
ROTOR INERTIA ( $\text{Kg} \cdot \text{m}^2 \times 10^{-7}$ )	210
THEORETICAL ACCELERATION ( $\text{rad} \times \text{sec}^{-2}$ )	50000
BACK E.M.F. (V/Krpm)	60
MASS (Kg)	0.65
LEADS CODE	IV

### TORQUE/SPEED CURVE



(\*)Bipolar series connection.

IV



Suggested R.T.A. drive series: BSD, CSD, NDC, ADW, HGD, FLEX-DRIVE



Gral.C.M.de Alvear 171  
(B1832BVC) - Lomas de Zamora



(+54 11) 3988-7001



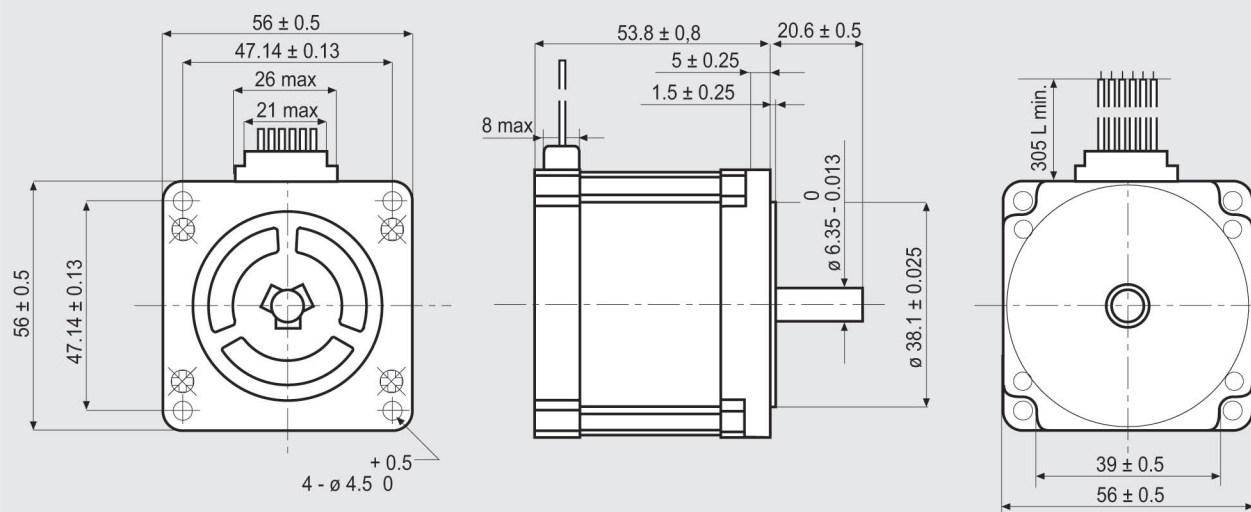
Whatsapp  
(+54 911) 5383-9778



ventas@varitel.com



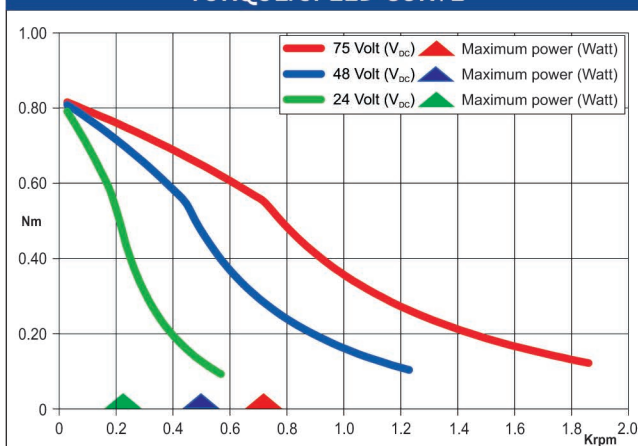
### Dimensions (Unit:mm)



### FEATURES

MODEL	103-H7123-0440
BASIC STEP ANGLE	1.8° ± 0.09°
BIPOLAR CURRENT (Amp)	1.5 <sup>(*)</sup>
UNIPOLAR CURRENT (Amp)	2.0
RESISTANCE (Ohm)	1.6
INDUCTANCE (mH)	3.8
BIPOLAR HOLDING TORQUE (Ncm)	110
UNIPOLAR HOLDING TORQUE (Ncm)	85
ROTOR INERTIA (Kgm <sup>2</sup> x 10 <sup>-7</sup> )	210
THEORETICAL ACCELERATION (rad x sec. <sup>-2</sup> )	50000
BACK E.M.F. (V/Krpm)	31
MASS (Kg)	0.65
LEADS CODE	IV

### TORQUE/SPEED CURVE



(\*)Bipolar series connection.



Suggested R.T.A. drive series: BSD, CSD, NDC, ADW, HGD, FLEX-DRIVE



Gral. C.M. de Alvear 171  
(B1832BVC) - Lomas de Zamora



(+54 11) 3988-7001



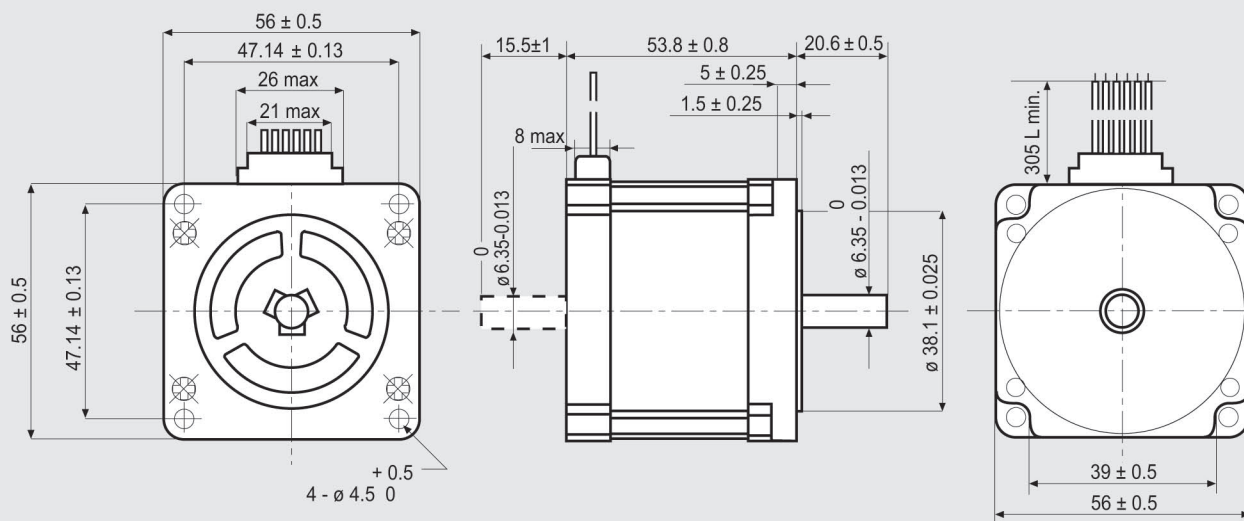
Whatsapp  
(+54 911) 5383-9778



ventas@varitel.com



### Dimensions (Unit:mm)

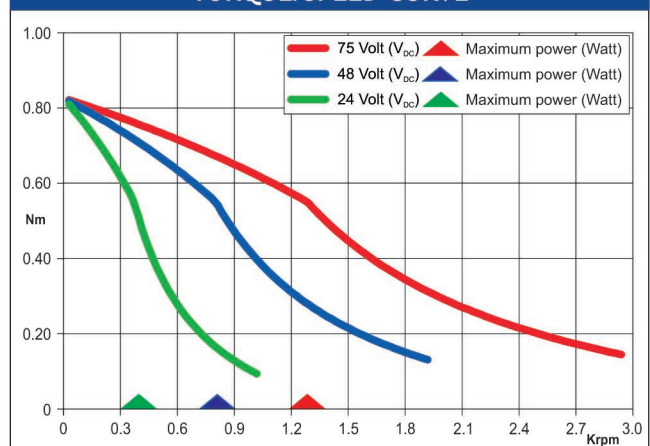


### FEATURES

MODEL	103-H7123-0740 (103-H7123-0710)
BASIC STEP ANGLE	1.8° ± 0.09°
BIPOLAR CURRENT (Amp)	2.2 <sup>(*)</sup>
UNIPOLAR CURRENT (Amp)	3.0
RESISTANCE (Ohm)	0.77
INDUCTANCE (mH)	1.6
BIPOLAR HOLDING TORQUE (Ncm)	110
UNIPOLAR HOLDING TORQUE (Ncm)	85
ROTOR INERTIA (Kgm <sup>2</sup> x 10 <sup>-7</sup> )	210
THEORETICAL ACCELERATION (rad x sec. <sup>-2</sup> )	50000
BACK E.M.F. (V/Krpm)	20
MASS (Kg)	0.65
LEADS CODE	IV

Codes between brackets refer to double shaft models.

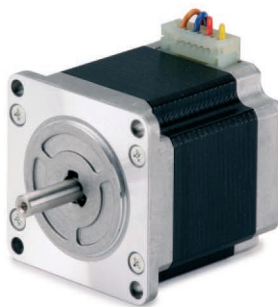
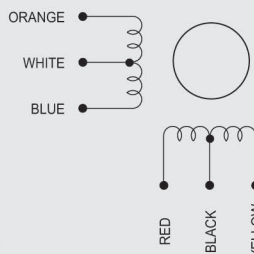
### TORQUE/SPEED CURVE



<sup>(\*)</sup>Bipolar series connection.

R.T.A. s.r.l. PAVIA (ITALY) SANYO DENKI CO., Ltd (JAPAN)

IV



Suggested R.T.A. drive series: BSD, CSD, NDC, ADW, HGD, FLEX-DRIVE



Gral.C.M.de Alvear 171  
(B1832BVC) - Lomas de Zamora



(+54 11) 3988-7001



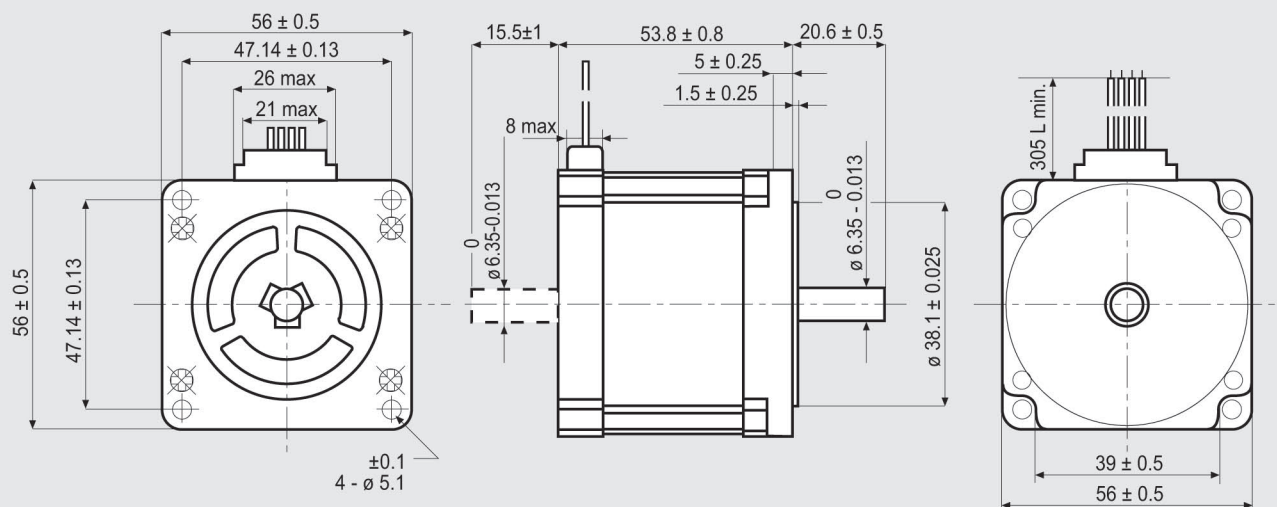
Whatsapp  
(+54 911) 5383-9778



ventas@varitel.com



### Dimensions (Unit:mm)

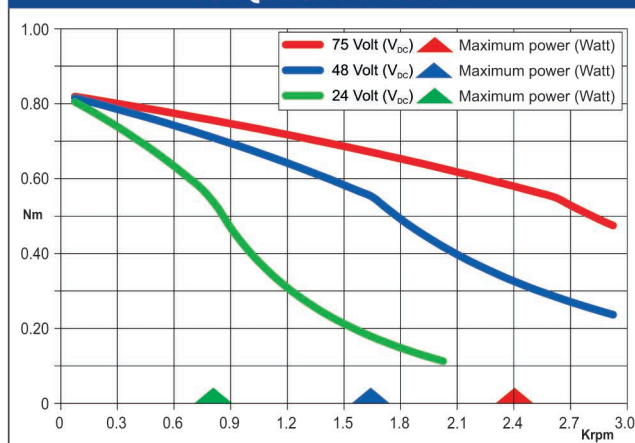


## FEATURES

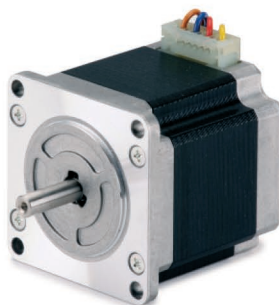
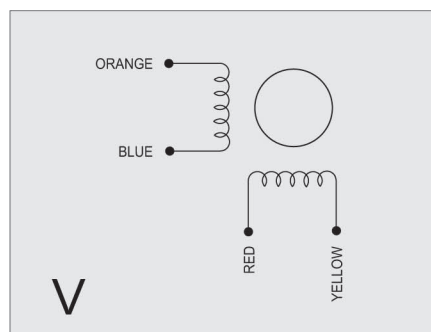
MODEL		103-H7123-1749 (103-H7123-1711)
BASIC STEP ANGLE		1.8° ± 0.09°
BIPOLAR CURRENT	(Amp)	4.0
UNIPOLAR CURRENT	(Amp)	
RESISTANCE	(Ohm)	0.41
INDUCTANCE	(mH)	1.6
BIPOLAR HOLDING TORQUE	(Ncm)	110
UNIPOLAR HOLDING TORQUE	(Ncm)	
ROTOR INERTIA	(Kgmm <sup>2</sup> x 10 <sup>-7</sup> )	210
THEORETICAL ACCELERATION	(rad x sec. <sup>-2</sup> )	50000
BACK E.M.F.	(V/Krpm)	20
MASS	(Kg)	0.65
LEADS CODE		V

Codes between brackets refer to double shaft models.

## TORQUE/SPEED CURVE



Dr. A. S. [REDACTED] PAVANILAY Y. T. [REDACTED] SAIN Y. A. [REDACTED] K. J. IAHAIN D. A. [REDACTED]



**Suggested R.T.A. drive series: BSD, CSD, NDC, ADW, HGD, FLEX-DRIVE**



Gral.C.M.de Alvear 171  
(B1832BVC) - Lomas de Zamora



(+54 11) 3988-7001



**Whatsapp**  
**(+54 911) 5383-9778**



[ventas@varitel.com](mailto:ventas@varitel.com)

**KARITEL**

**Importa, Distribuye y Garantiza**



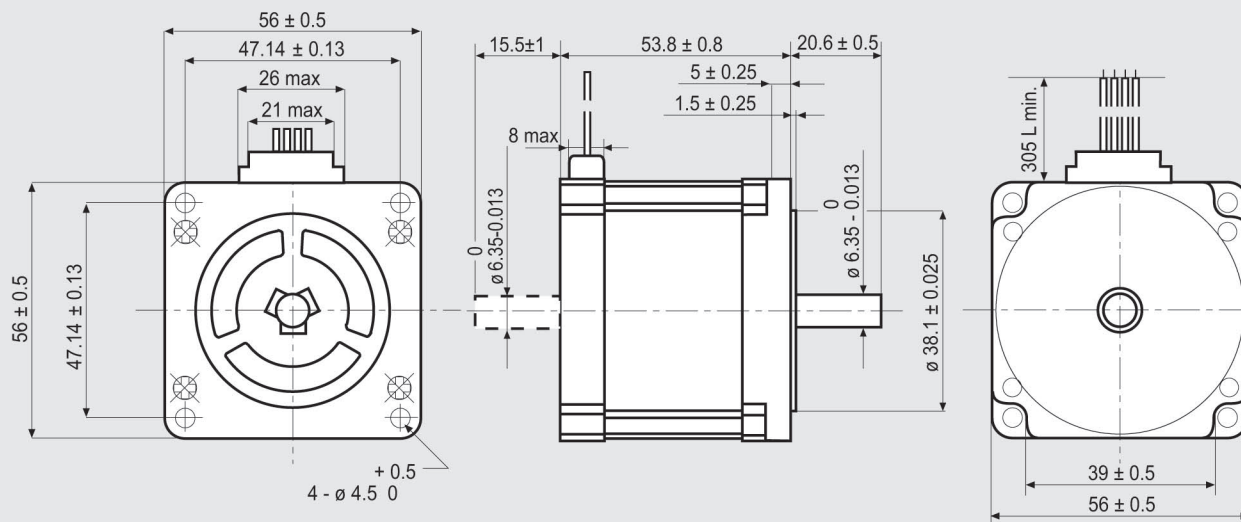
**CUIT.:30-70822241-7**



[www.varitel.com](http://www.varitel.com)



### Dimensions (Unit:mm)

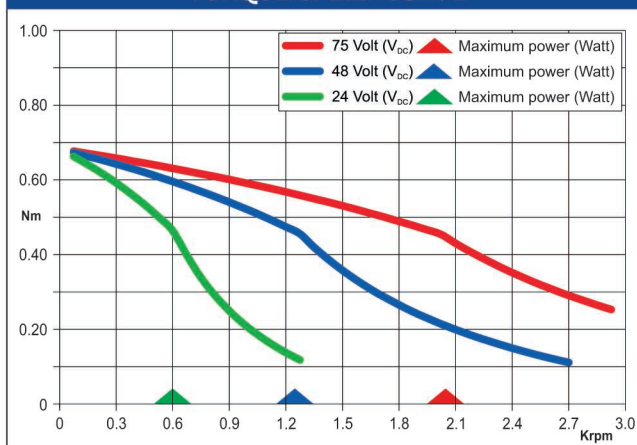


### FEATURES

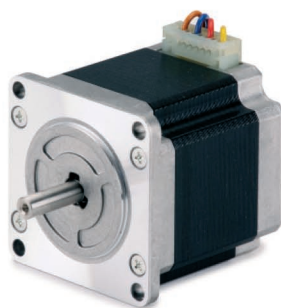
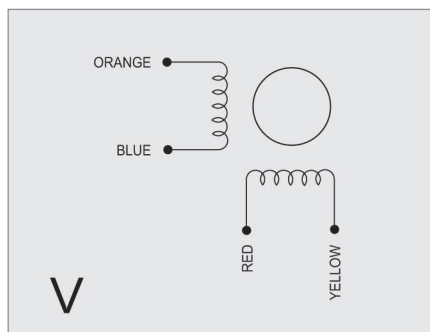
MODEL	103-H7123-5040 (103-H7123-5010)
BASIC STEP ANGLE	$1.8^\circ \pm 0.09^\circ$
BIPOLAR CURRENT (Amp)	2.0
UNIPOLAR CURRENT (Amp)	
RESISTANCE (Ohm)	0.8
INDUCTANCE (mH)	3.8
BIPOLAR HOLDING TORQUE (Ncm)	85
UNIPOLAR HOLDING TORQUE (Ncm)	
ROTOR INERTIA ( $\text{Kgm}^2 \times 10^{-7}$ )	210
THEORETICAL ACCELERATION ( $\text{rad} \times \text{sec}^{-2}$ )	38500
BACK E.M.F. (V/Krpm)	31
MASS (Kg)	0.65
LEADS CODE	V

Codes between brackets refer to double shaft models.

### TORQUE/SPEED CURVE



R.T.A. s.r.l. PAVIA (ITALY) SANYO DENKI CO., Ltd (JAPAN)



Suggested R.T.A. drive series: BSD, CSD, NDC, ADW, HGD, FLEX-DRIVE



Gral. C.M.de Alvear 171  
(B1832BVC) - Lomas de Zamora



(+54 11) 3988-7001



Whatsapp  
(+54 911) 5383-9778



ventas@varitel.com

